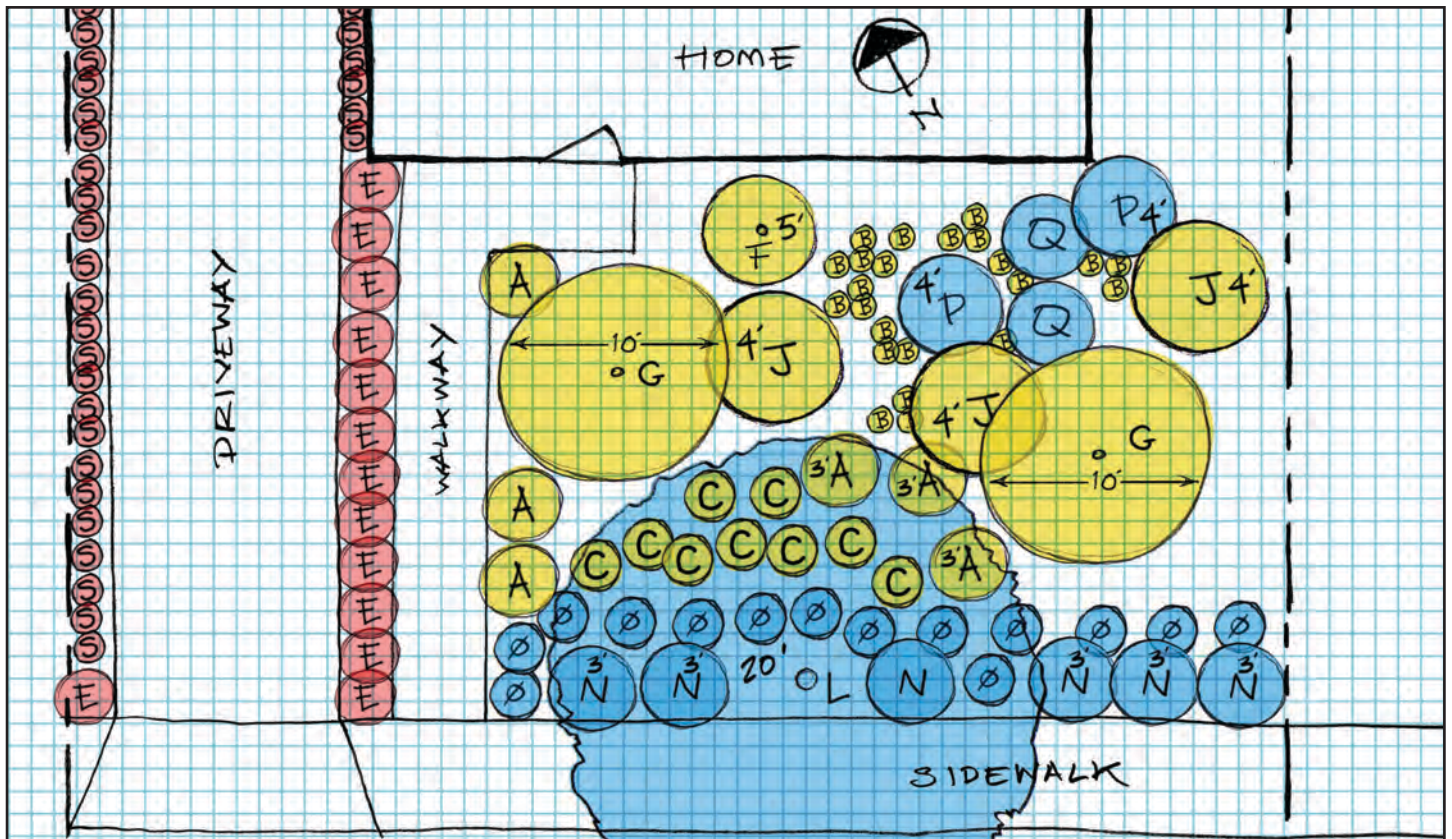


# Make your Garden Planting Plan



© G3, Alex Stevens, 2020

Qty.	Symbol	Form	P	Botanical (Latin) Name	Common Name	Plant Factor	Sun	Dimension H' x W'	D/E/S	Flower Color
6	A	Groundcover	x	Achillea millefolium	Common yarrow	L	F	2' x 3'	S	various
23	B	Grass		Carex pansa	California meadow sedge	M/L	F	1' x 1'	E	wheat
9	C	Grass		Carex tumulicola	Foothill sedge	L	F/PS	1' x 2'	E	cream, rust
13	E	Perennial	x	Erigeron glaucus	Seaside daisy	L/VL	F/PS	1' x 2'	E	lavender, yellow
1	F	Groundcover	x	Salvia 'Bee's Bliss'	Bee's Bliss sage	L	F/PS	2' x 5'	S	pink, lavender
2	G	Perennial	x	Solidago velutina ssp. californica	California goldenrod	L	F/S	5' x 10'+	E	yellow
3	J	Perennial	x	Verbena bonariensis	Purpletop vervain	L	F	4' x 3'	E	purple
1	L	Tree/Shrub	x	Cercis canadensis 'Forest Pansy'	Forest Pansy redbud	M	F	20' x 25'	D	purple
6	N	Perennial	x	Iris douglasiana	Douglas iris	M/L	F/S	2' x 3'	E	various
14	O	Perennial	x	Geranium sanguineum	Bloody cranesbill	M	F/S	2' x 3'	S	fuchsia pink
2	P	Perennial	x	Pacific Coast iris	Pacific Coast iris hybrids	M/L	PS	2' x 1'	E	various
2	Q	Perennial		Juncus patens / Juncus effusus	California wiregrass	M	F/PS	3' x 3'	E	brown
31	S	Grass		Festuca idahoensis	Idaho fescue	VL	F	1.5' x 1'	E	wheat

**Plan for Planting.** Start with a copy of your **Microclimates Maps** (see p. 24). Begin the plant design process by selecting the right plant for the right place in your garden. Use the Plant List above to practice matching plants with the conditions, and represent the plants with circles the appropriate size and color reflecting water requirements. This is the foundation of your Plant Shopping List (see p. 69). It's just a paper plan, so move things around! Experiment! Then move on to the **Example Plans** (p. 52).

- 1 Take into consideration microclimates and select plants that need Full Sun, Part Shade or Shade as appropriate.
- 2 Consider Plant Factors - Low or Very Low plants on berms and Moderate plants in the swales.
- 3 Consider the height, width and root depth of each plant.
- 4 What form of plant do you desire - Grass or Groundcover, Vine, Shrub, Perennial, or Tree?
- 5 Once you've drawn your plan, count the number of plants you will need to order and mark them in the Quantity box.

# Use these Example Plans

On the following pages, we have included garden plan examples of **Front** and **Back** yards in the North and South coast climates as well as for Inland areas. A **Master Plant List** has been provided that you can use to substitute for the plants suggested on each of the plans (see p. ). For example, take note of the plant number on the plan (**1-17**) and consult the **Master Plant List** for alternative selections.

## Example Plan A



The **Planting Plans** take into consideration the regional climate, such as Coastal or Inland, the microclimates on the particular property, and the proposed contouring such as berms and basins (see p.41) substituted using the Master List.

The **Contouring and Hydrozone Plans** show how rainwater generated from the roofs of the buildings will be captured and held on the property for the benefit of the plants, and how the plants need to be hydrozoned efficiently.



- 1** Blue for **MODERATE** water use,
- 2** Yellow for **LOW** water use, and
- 3** Red for **VERY LOW** water use.

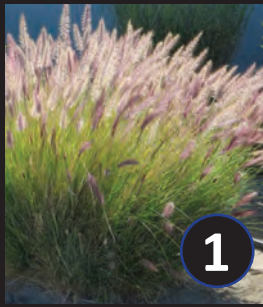


The **Butterfly** icon indicates plants that support the life cycle of pollinators, butterflies and other insects.

Wherever we have provided plant selections, we identify them by their water requirements by placing their identification numbers on a colored background. You can use this color coding to help you group plants by their water requirements in your new landscape, making it easier to irrigate them properly.

# Don't plant a Pest

## Remove These Invasive Plant Pests



**1** *Pennisetum setaceum*  
African Fountain Grass



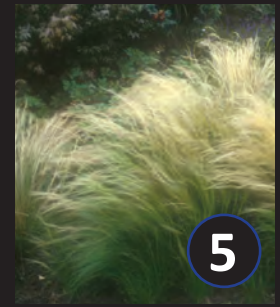
**2** *Vinca major*  
Periwinkle



**3** *Cotoneaster*  
Cotoneaster



**4** *Cytisus scoparius*  
Scotch Broom



**5** *Nassella tenuissima*  
Mexican Feather Grass

Some exotic plants such as these and species of *Pyracantha*, Algerian ivy (*Hedera algeriensis*), and privet (*Ligustrum*) can be innocently planted without realizing they end up beyond the far reaches of our gardens when birds, wind or water carry them to areas where they are difficult to control.

Their spreading and greedy behavior can take over native habitats, inhibiting areas for all to enjoy. Few of these species offer any benefits to the local animals and insects. Invasive species and species that act like invasives should be removed from your gardens, removed from nursery stock and should not be planted in the first place.

## Plant These Well Behaved Alternatives Instead



**1** *Melica imperfecta*  
Small Flowered Melica



**2** *Campanula poscharskyana*  
Serbian Bellflower



**3** *Heteromeles arbutifolia*  
Toyon / Christmas Berry



**4** *Peritoma arborea*  
Bladderpod



**5** *Stipa cernua*  
Nodding Needlegrass

 Benefits Pollinators



**PlantRight** [www.plantright.org](http://www.plantright.org)

Since 2005, PlantRight has been working with California's nursery industry to stop the sale of horticultural invasive plants in ways that are good for business and the environment. PlantRight unites leaders from California's nursery and landscape industries, conservation groups, academia, and government agencies in a voluntary, science-based, and collaborative way. PlantRight's Plant List, identifying the highest priority invasive garden plants, is the cornerstone of the program. For each plant on the invasive plant list, PlantRight suggests several non-invasive alternatives. Retailer partners pledge not to sell any plants on the Plant List, and any plants added to the list in the future. To track its progress and inform the plant list, PlantRight conducts a survey of retail nurseries throughout the state. PlantRight also has a Continuing Education program available for free to anyone who wants to learn about horticultural invasive plants.



**California Native Plant Society (CNPS)** [cnps.org](http://cnps.org) [www.calscape.org](http://www.calscape.org)

Our gardens play an important role in local ecosystems. The plants we choose for our gardens have the power to support pollinators, build wildlife corridors, and restore our natural landscapes. **Calscape.org**, is a tool CNPS has developed that makes it easier for gardeners to create thriving, natural gardens and avoid invasive plants. Use it to discover which plants are native to your location and to search by water requirements, blooming season, pollinator habitat and more. You also can build custom plant lists and find nearby nurseries who carry the plants you want. In addition to online resources, CNPS has 35 local chapters statewide that host native plant sales, garden tours, field trips, and expert talks.

# Use this Project Plant List

Sym	Form	Botanical (Latin) Name	Common Name	H x W	Sun	D/E/S	Native	P	Flower Color
1	tree	Arbutus 'Marina' (multi)	Strawberry tree	25-50' x 25-40'	FS	E			pink
1	tree	Chilopsis linearis 'Art's Seedless'	Desert willow	25' x 25'	FS	D			pink-rose
1	tree	Geijera parviflora	Australian willow	20-30' x 15-20'	FS	E			none
2	shrub	Arctostaphylos 'Howard McMinn'	Manzanita	7-10' x 7-10'	FS	E	X		light pink
2	tree	Bauhinia Lunarioides	Anacacho orchid tree	12' x 10'	PS	E			white pink
2	shrub	Grevillea 'Long John'	Long John grevillea	8-10' x 8-12'	FS	E			rose pink
3	shrub	Heteromeles arbutifolia	Toyon	6-10' x 6-8'	FS/PS	E	X	X	white
3	shrub	Rhamnus alaternus 'John Edwards'	Italian buckthorn	15' x 6'	FS/PS	E			Insignificant
3	shrub	Prunus ilicifolia ssp. lyonii	Catalina cherry	15' x 10'	FS/PS	E	X	X	white
4	succulent	Agave 'Blue Flame'	Blue flame agave	2-3' x spreads	FS	E			white
4	succulent	Agave 'Blue Glow'	Blue glow agave	1-2' x 2-3'	FS	E			rarely
4	succulent	Aloe vanbalenii	Aloe	1-2' x 3-4'	FS/PS/S	E			yellow orange
5	perennial	Achillea millefolium 'Paprika' or 'Moonshine'	Yarrow	1-2' x 2-3'	FS/PS	E	X	X	red or yellow
5	succulent	Aeonium urbicum 'Salad Bowl'	Salad bowl	1-2' x clumping	FS/S	E			yellow
5	perennial	Penstemon heterophyllus 'Margarita BOP'	Penstemon	2' x 2'	FS	S	X	X	blue violet
6	perennial	Galvezia speciosa	Island snapdragon	2.5' x 4'	FS/S	E	X	X	red
6	perennial	Salvia clevelandii 'Winifred Gilman'	Blue sage	3' x 3'	FS	E	X	X	blue violet
6	perennial	Salvia leucantha 'Santa Barbara'	Mexican bush sage	2-3' x 2-4'	FS	E		X	purple
7	grass	Bouteloua gracilis 'Blonde Ambition'	Blue gramma	1-2' x 1-2'	FS	D	X	X	reddish purple
7	grass	Muhlenbergia capillaris	Muhly grass	2-3' x 2-3'	FS/PS	E			rose mauve
7	grass	Aristida purpurea	Purple three-awn	2-3' x 1-2'	FS/PS	S	X	X	purple
8	succulent	Sedum angelina	Stonecrop	4-6" x 8"	PS/S	E			yellow
8	succulent	Senecio serpens	Blue chalk sticks	1' x 2-3'	FS	E			white
8	succulent	Cisanthe grandiflora	Rock purslane	1' x 3'	FS	E			purple
9	perennial	Anemopsis californica	yerba mansa	1' x 2'	FS/PS	S	X	X	Cream
9	bulb	Zephyranthes candida	White rain lily	1' x 1-2'	FS/S	E			white
9	perennial	Iris douglasiana	Douglas iris	2' x 3'	FS/PS	S	X	X	various
10	grass	Carex tumulicola	Berkeley sedge	1-2' x 1-2'	FS/S	E	X	X	insignificant
10	grass	Lomandra longifolia 'Breeze'	Spiny-headed mat rush	2-3' x 2-4'	FS/PS	E			yellow
11	succulent	Bulbine frutescens	Bulbine	1-2' x 4'	FS/PS	E			orange
11	succulent	Portulacaria afra 'Prostrate form'	Prostrate elephant's food	1-2' x 4-6'	FS/S	E			lavender
11	perennial	Salvia 'Bee's Bliss'	Sage	1-2' x 6'	FS	E	X	X	lavender
12	groundcover	Dymondia margaretae	Silver carpet	<1' x spreads	FS/PS	E	X		yellow
12	groundcover	Phyla nodiflora	Frogfruit	3-6" x 3-6"	FS	E	X	X	lilac
13	shrub	Frangula californica 'Eve Case'	Coffee berry	4' x 4'	FS/S	E	X	X	greenish white
13	shrub	Frangula californica 'Mound San Bruno'	Coffee berry	4-6' x 4-6'	FS/S	E	X	X	greenish white
13	shrub	Ribes viburnifolium	Catalina perfume	3-6' x 4-6'	FS/S	E	X	X	rose pink
14	groundcover	Fragaria chiloensis	Beach strawberry	6-8" x spreads	PS/S	E	X	X	white
15	shrub	Ceanothus 'Concha'	California lilac	6-8' x 6-8'	FS/PS	E	X	X	dark blue
15	shrub	Leucophyllum frutescens 'Compacta'	Compact Texas ranger	4-6' x 5'	FS	E	X	X	dark pink
16	perennial	Epilobium canum ssp canum	California fuchsia	<1' x 3-4'	FS	S	X	X	orange red
16	perennial	Asteriscus maritimus	Gold coin daisy	<1' x 3-4'	FS	E			yellow
16	low shrub	Teucrium Cossonii	Majorcan teucrium	<1' x 3'	FS	S			purple
17	succulent	Hesperaloe parviflora 'Brakelights'	Hesperaloe	2-3' x 2-3'	FS	E		X	rose
17	perennial	Sphaeralcea ambigua	Red desert mallow	2-3' x 2-3'	FS	E	X	X	red

## Plant List Key

Form:	Water Use:	Sun:	P:	D/E/S:	Notes:
Natural shape taken by the plant	<b>M</b> =Moderate <b>L</b> =Low <b>VL</b> = Very Low	<b>FS</b> =Full <b>PS</b> =Part Shade <b>S</b> =Shade	Plant supports life cycle of pollinators, butterflies and insects	<b>D</b> =Deciduous, <b>E</b> =Evergreen, <b>S</b> =Semi-Deciduous	Section of the book where you can read more about this plant

# Introducing **The Plants**



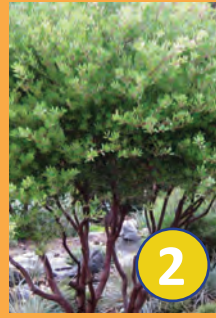
*Arbutus marina*



*Chilopsis linearis*



*Geijera parviflora*



*Arctostaphylos*  
*'Howard McMinn'*



*Bauhinia lunarioides*



*Grevillea 'Long John'*



*Heteromeles*  
*arbutifolia*



*Rhamnus alaternus*  
*'John Edwards'*



*Prunus ilicifolia*  
*ssp. lyonii*



*Agave 'Blue Flame'*



*Agave 'Blue Glow'*



*Aloe vanbalenii*



*Achillea millefolium*



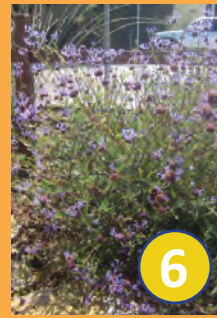
*Aeonium urbicum*  
*'Salad Bowl'*



*Penstemon*  
*heterophyllus*



*Galvezia speciosa*



*Salvia clevelandii*  
*'Winifred Gilman'*



*Salvia leucantha*  
*'Santa Barbara'*



*Bouteloua gracilis*  
*'Blonde Ambition'*



*Muhlenbergia*  
*capillaris*



*Aristida purpurea*



*Sedum angelina*



*Senecio serpens*



*Cisanthe grandiflora*

# Introducing **The Plants**



Anemopsis californica



Zephyranthes candida



Iris douglasiana



Carex tumulicola



Lomandra longifolia 'Breeze'



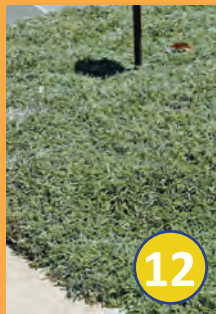
Bulbine frutescens



Portulacaria afra 'Prostrate form'



Salvia 'Bee's Bliss'



Dymondia margaretae



Phyla nodiflora



Frangula 'Eve Case'



Frangula californica 'Mound San Bruno'



Ribes viburnifolium



Fragaria chiloensis



Ceanothus concha



Leucophyllum frutescens 'Compacta'



Epilobium canum spp canum



Asteriscus maritimus



Teucrium cossonii



Hesperaloe parviflora 'Brakelights'

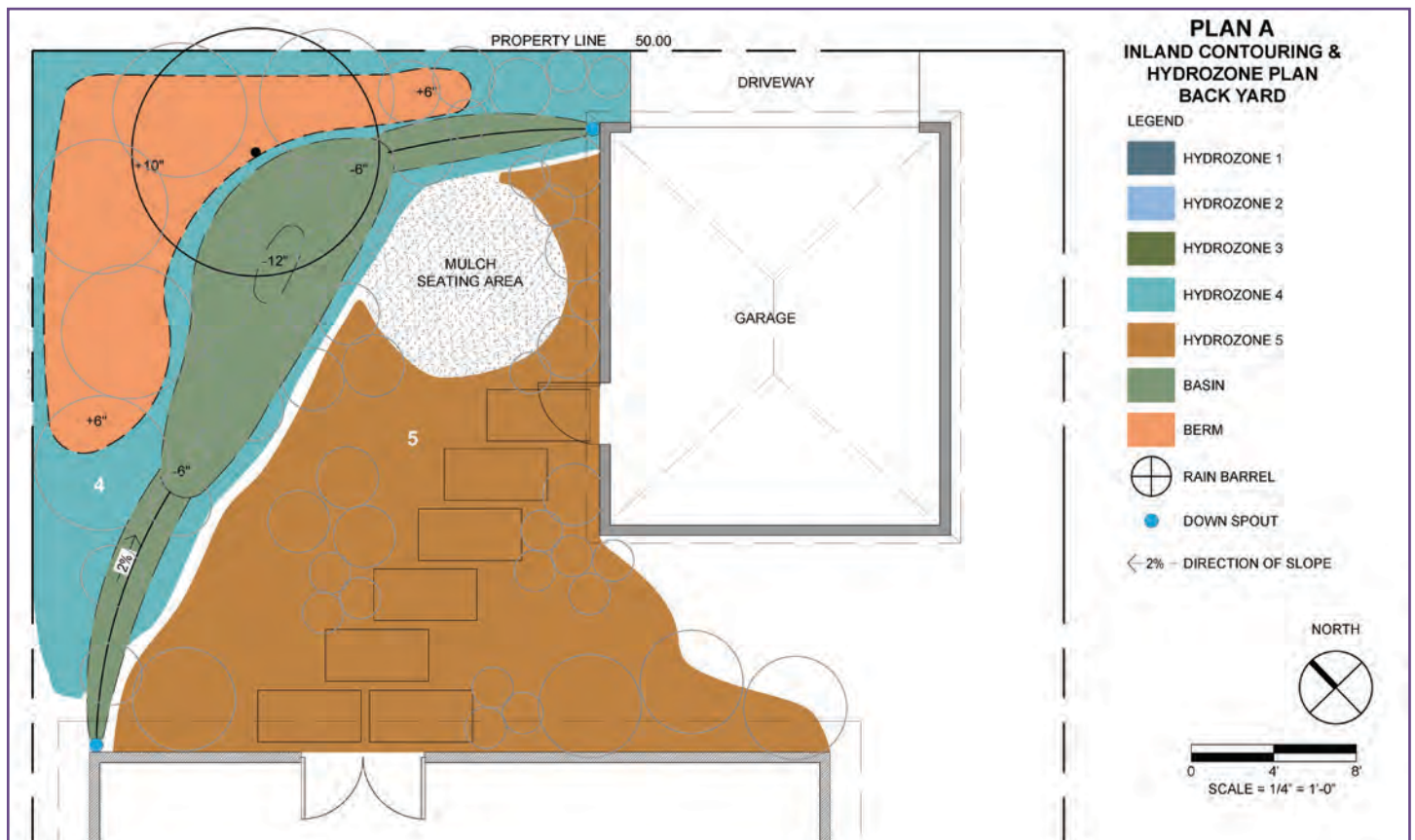
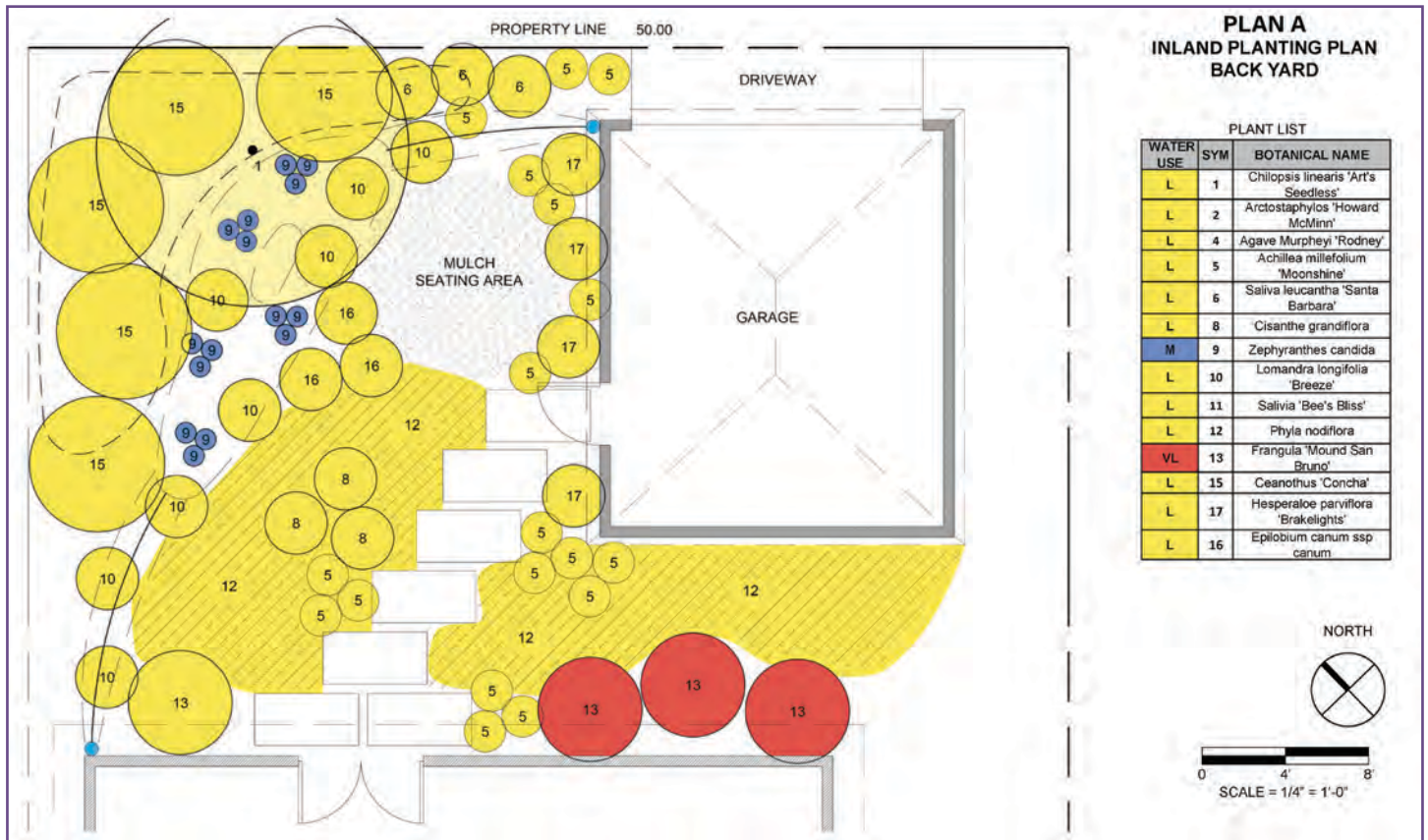


Sphaeralcea ambigua

# Plan A-Inland Planting Plan Front Yard

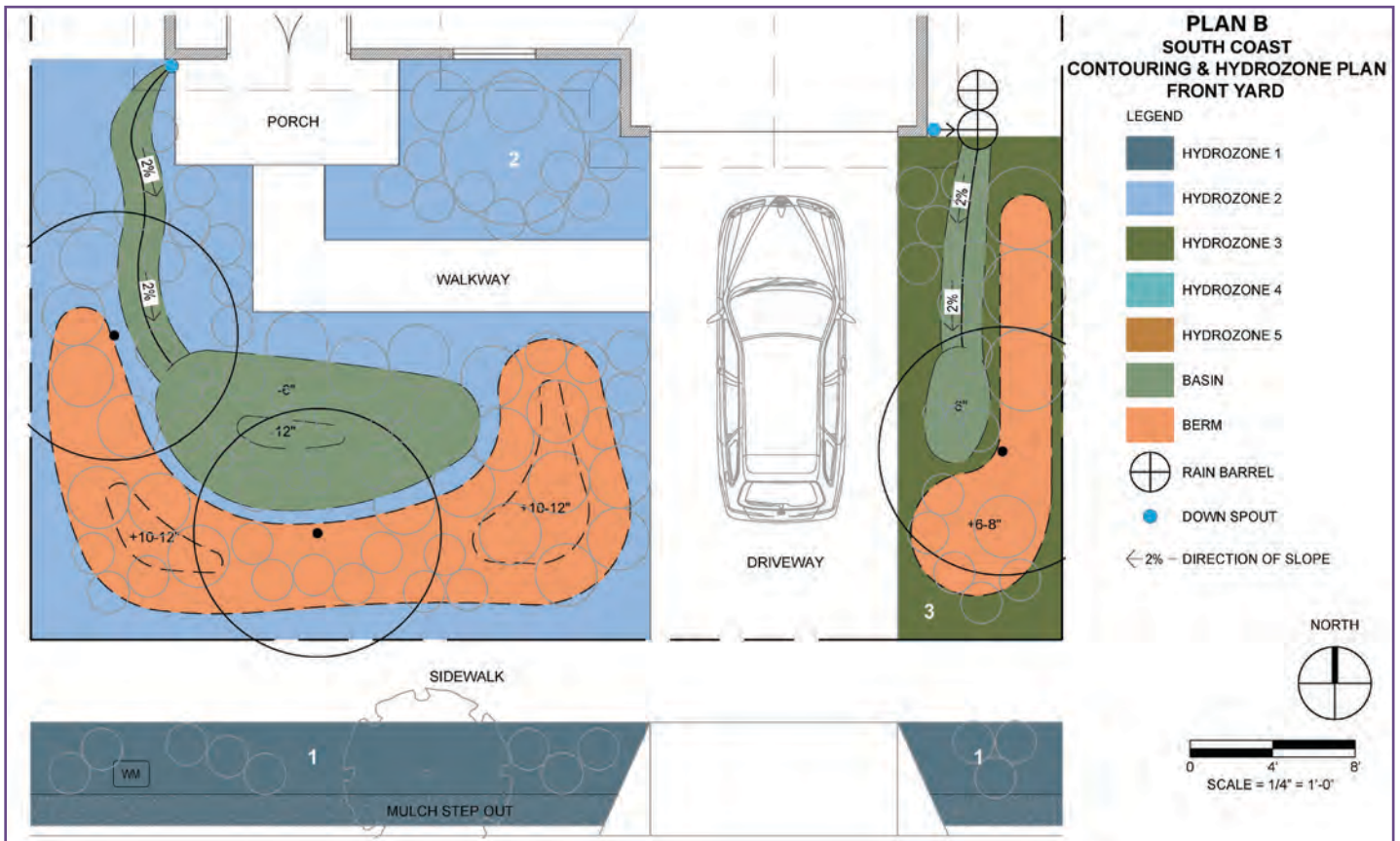


# Plan A-Inland Planting Plan Back Yard

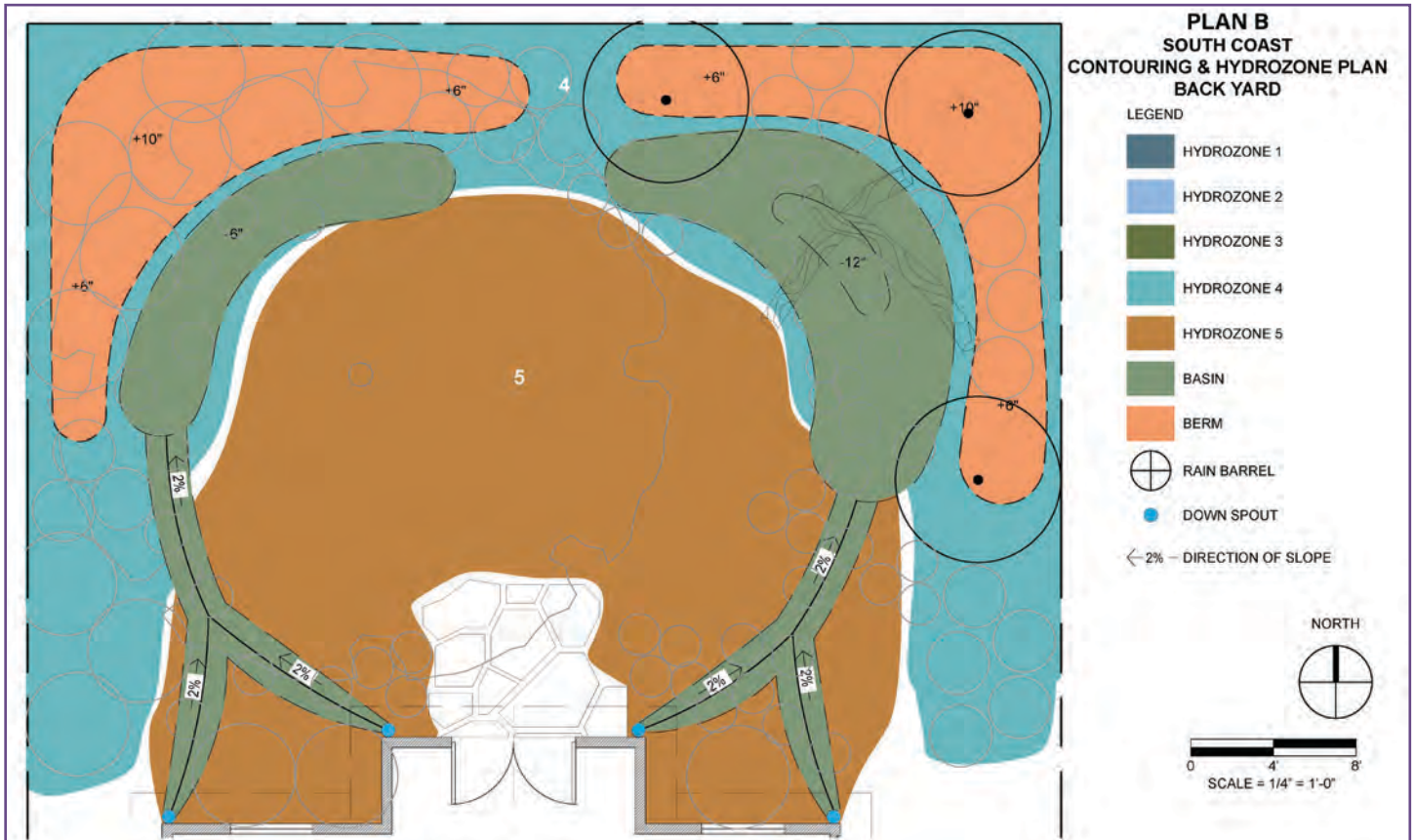
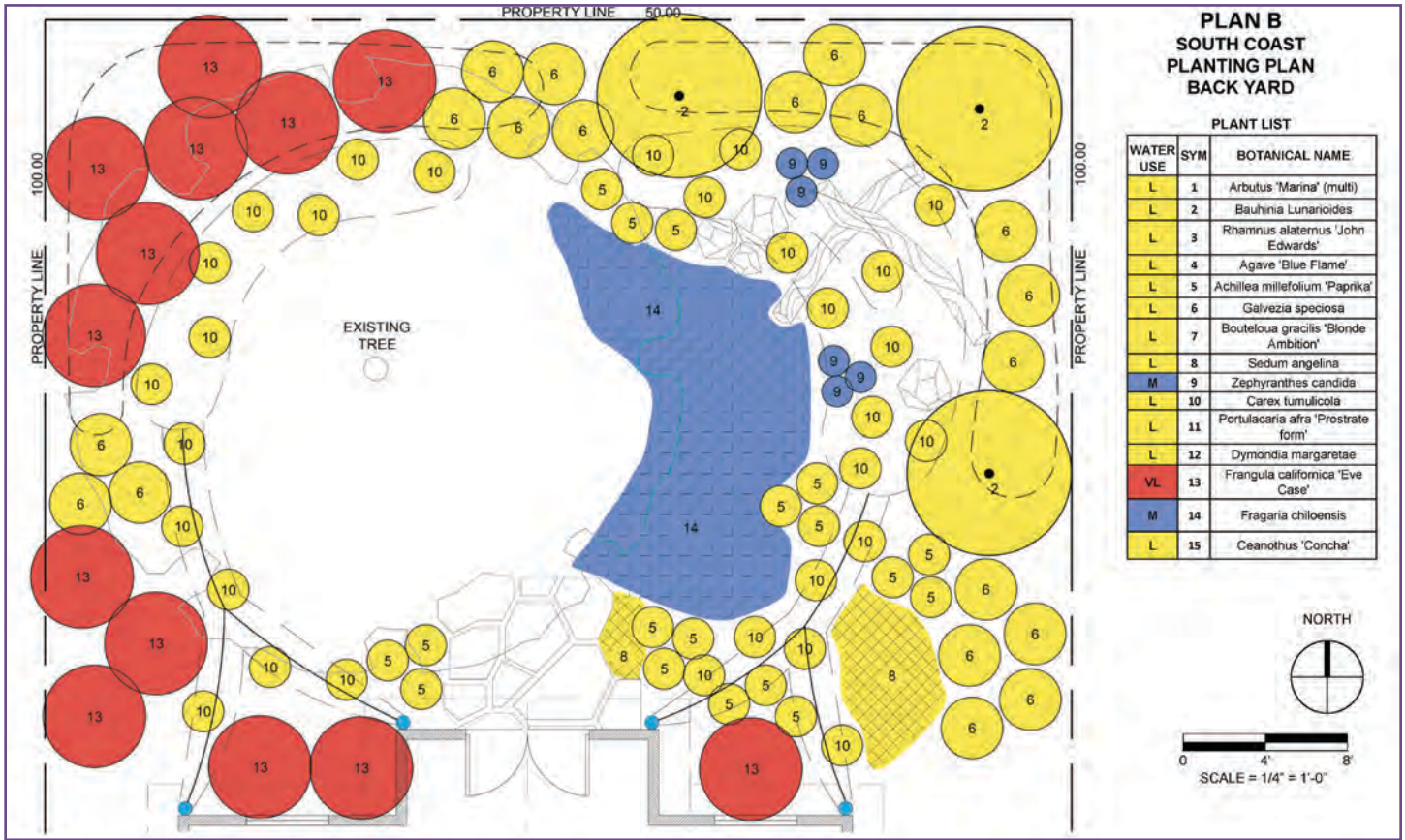




# Plan B-South Coast Planting Plan Front Yard



# Plan B-South Coast Planting Plan Back Yard



# Plan C-North Coast Planting Plan Front Yard



# Plan C-North Coast Planting Plan Back Yard

